

We've only
scratched
the **surface**



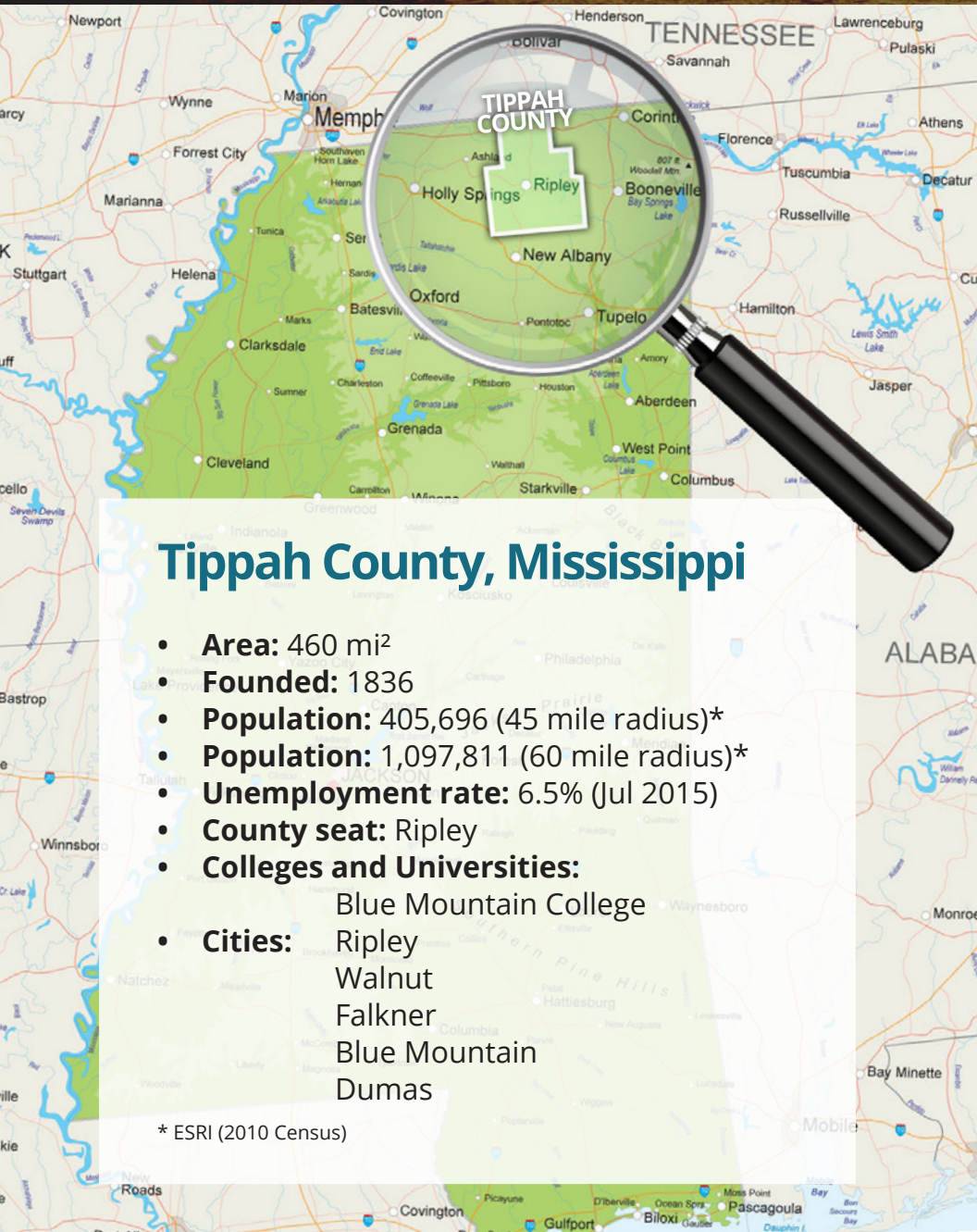
TIPPAH COUNTY, MISSISSIPPI

www.tippahcounty.org

Find us on
Facebook

@tippahdev

We've only scratched the surface



Tiptah County, Mississippi

- **Area:** 460 mi²
- **Founded:** 1836
- **Population:** 405,696 (45 mile radius)*
- **Population:** 1,097,811 (60 mile radius)*
- **Unemployment rate:** 6.5% (Jul 2015)
- **County seat:** Ripley
- **Colleges and Universities:**
 - Blue Mountain College
- **Cities:**
 - Ripley
 - Walnut
 - Falkner
 - Blue Mountain
 - Dumas

* ESRI (2010 Census)

Getting to know Tiptah County is like getting to know a neighbor, you have to visit more than once. When you meet the people, explore the places, and discover the potential here, you will find that there is much more here than meets the eye.

From the rolling hills, to the farmland sprawling throughout it, Tiptah County is not only beautiful, but it is rich with natural resources.

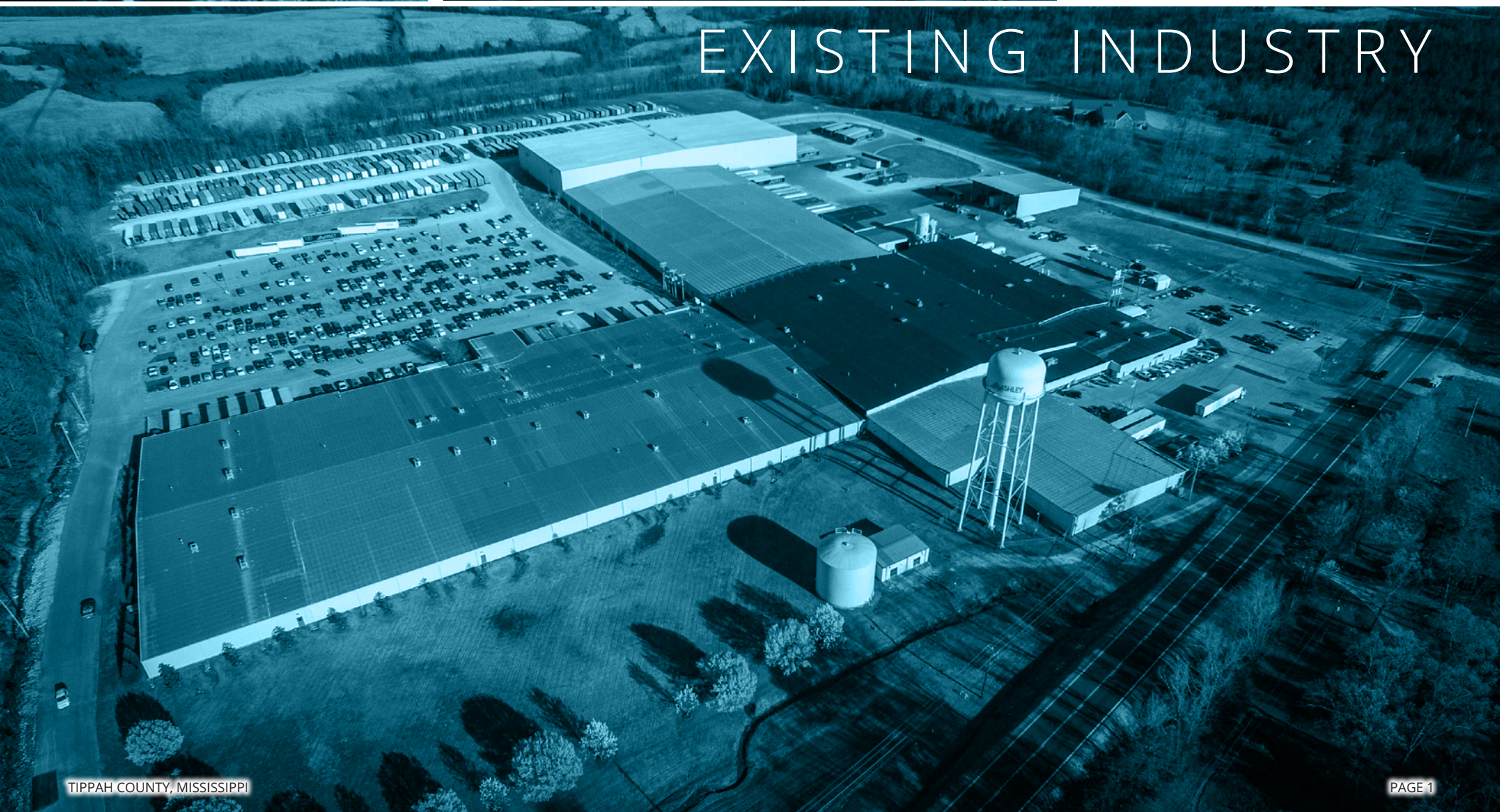
Our workforce is driven by a work ethic that has been handed down through generations of farmers, mechanics, construction, and factory workers who believe in the value of hard work and dedication.

Come see for yourself, you will find that we have only scratched the surface.





EXISTING INDUSTRY



COMPANIES INSIDE OF TIPPAH COUNTY

Company Name	No.	Industry / Product
Abby Manufacturing Co.	125	ATV Accessories
Alaco of Mississippi	37	Polyurethane Foam
Aluma-Form	50	Fiberglass / Aluminum
Ashley Furniture	1,250	Upholstered Furniture
Bauhaus Furniture	39	Furniture
Big M Trucking	400	Trucking and Logistics
Blue Mountain Production	95	Cat Litter Products
CECA	34	Impact Extruded Metal
Colom Construction	20	Road Construction
Dirt Cheap Distribution	260	Distribution
Dixie-Net	15	Communications
Draka Elevator Products	20	Elevator Kits
Ecowater Systems	152	Water Filtration
Edwards Pharmaceuticals	20	Pharmaceuticals
Elite Elastomers	40	Rubber Gaskets
Five Star Marine	40	Fiberglass Incasement
Hankins	101	Wood Products
Medical Products, Inc.	50	Wholesale Supplier
Oil-Dri	100	Oil Absorbant
Profile Products	48	Turf Builder
Thyssen-Krupp	74	Elevator Systems
Tippah County Growers	20	Wholesale Nursery
WARCO / Biltrite	68	Rubber Products

COMPANIES WITHIN 45 MILES WHO EMPLOY OVER 1,000

Company Name	Location	No.
North Mississippi Medical Center Inc	Tupelo, MS	4212
BancorpSouth, Inc.	Tupelo, MS	4002
Carrier Corporation	Collierville, TN	3400
Ashley Furniture Home Store	Ecru, MS	3000
University of Mississippi	University, MS	2300
Toyota Motor Manufacturing, Mississippi, Inc.	Blue Springs, MS	2000
Cooper Tire & Rubber Co	Tupelo, MS	1500
Renasant Bank	Tupelo, MS	1400
State of Tennessee State F & A Payroll	Arlington, TN	1298
Mississippi Methodist Senior Services Inc	Tupelo, MS	1244
Lane Furniture Industries	Tupelo, MS	1200
Magnolia Regional Health Center	Corinth, MS	1196
Baptist Memorial Hospital-North Mississippi Inc	Oxford, MS	1039
Institute Of Community Services Inc.	Holly Springs, MS	1003
MTD Aircap	Verona, MS	1000
Philips Day-Brite	Tupelo, MS	1000
North Mississippi Regional Center	Oxford, MS	1000

COMPANIES WITHIN 45 MILES WHO EMPLOY OVER 500

Company Name	Location	No.	Company Name	Location	No.
American Furniture Manufacturing, Inc.	Ecru, MS	900	Caye Upholstery LLC	New Albany, MS	600
Ayrshire Electronics Of Ms LLC	Corinth, MS	900	Corinthian Furniture	Corinth, MS	600
LFI WIND DOWN, INC.	Tupelo, MS	900	Master-Bilt Products	New Albany, MS	600
Ashley Furniture Home Store	Ripley, MS	800	Southern Motion	Pontotoc, MS	600
GBC	Booneville, MS	800	Tecumseh Products Company-Verona	Verona, MS	600
JESCO, Inc.	Tupelo, MS	800	State of Tennessee State F & A Payroll	Bolivar, TN	600
Super Sagless Corp	Tupelo, MS	800	Western Mental Health Institute	Bolivar, TN	600
Caterpillar Inc.	Corinth, MS	750	Walmart Distribution Center	New Albany, MS	580
Diversity-Vuteq LLC	New Albany, MS	750	Tennessee Dept. of Children's Services	Savannah, TN	580
Auto Parts Manufacturing	Guntown, MS	700	LFI WIND DOWN, INC.	Belden, MS	550
H M Richard Manufacturing Inc	Guntown, MS	700	Microport Orthopedics Inc.	Arlington, TN	550
Mtd Products Inc	Tupelo, MS	700	North Mississippi Hospice of Oxford, LLC	Oxford, MS	516
Tupelo Furniture Market, Inc	Tupelo, MS	700	Bauhaus Furniture Group, LLC	Saltillo, MS	500
The Alpha Corporation of Tennessee	Collierville, TN	700	Carpenter Co.	Verona, MS	500
Thyssen Krupp Elevator	Middleton, TN	700	F L Crane & Sons	Tupelo, MS	500
Krueger International, Inc.	Tupelo, MS	621	Walmart Supercenter	Corinth, MS	500
McNairy County Board of Education	Selmer, TN	621	Fayette County Schools	Somerville, TN	500
Emerson Electric Co	Oxford, MS	616	Kilgore Test Tunnel	Toone, TN	500
Belden Manufacturing Plant	Belden, MS	600	Packaging Corp Of America	Counce, TN	500

Data Source: Hoovers, OneSource

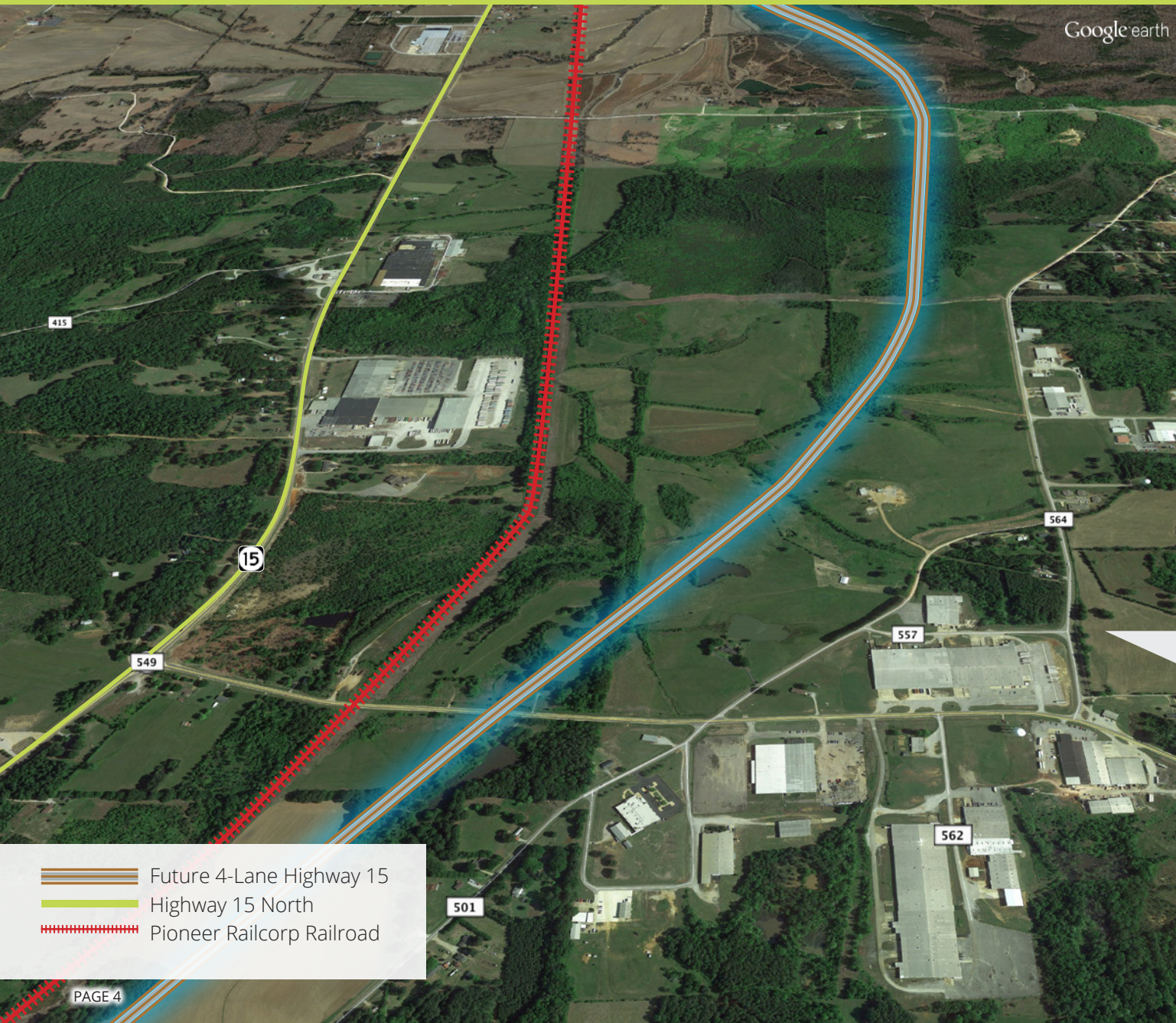
Prepared by: **THE VALLEY WORKS** **TVA**



SITES & BUILDINGS

SITES & BUILDINGS

NORTH RIPLEY INDUSTRIAL PARK ACCESS TO TRANSPORTATION



DISTANCE: (in miles)

Toyota	25
Tupelo, MS	32
Memphis, TN	59
Jackson, TN	54
Huntsville, AL	157
Birmingham, AL	180
Interstate 22 (MS-78)	18
Interstate 40	54
Interstate 69	43
US Highway 72	14
MS Highway 15	On-site

QUICK FACT:

At over 328 miles,
Highway 15 is the
longest highway
in the Mississippi
Highway System.

- Future 4-Lane Highway 15
- Highway 15 North
- Pioneer Railcorp Railroad

NORTH RIPLEY INDUSTRIAL PARK EXISTING COMPANIES AND UTILITIES

- Ashley Furniture Industries
- Alaco
- Business Incubator
- Carolina Accents
- Ecowater Systems
- Elite Elastomers
- Elite Solutions
- Industrial Timber
- Resourceful Environmental Solutions (RES)
- Tippah Career & Technology Center
- Warco Biltrite

ENVIRONMENTAL STUDY

- Phase I - **PASSED**
- Phase II - **PASSED**

ELECTRIC SERVICE

TVA Service Area
Tippah Electric Power Association

- 161 KV TVA Line on Site.
- 10 Megawatts on Site.
- 50 Megawatts @ 18 months.
- 3 Phase

NATURAL GAS

Provided by City of Ripley

- 2 inch, 300 lb line into 2 inch 50 lb line throughout

SEWER SYSTEM

Provided by City of Ripley

- 12 inch main line

WATER

Provided by City of Ripley

- 10 inch main line
- 4 Tanks (1 million gal. combined)

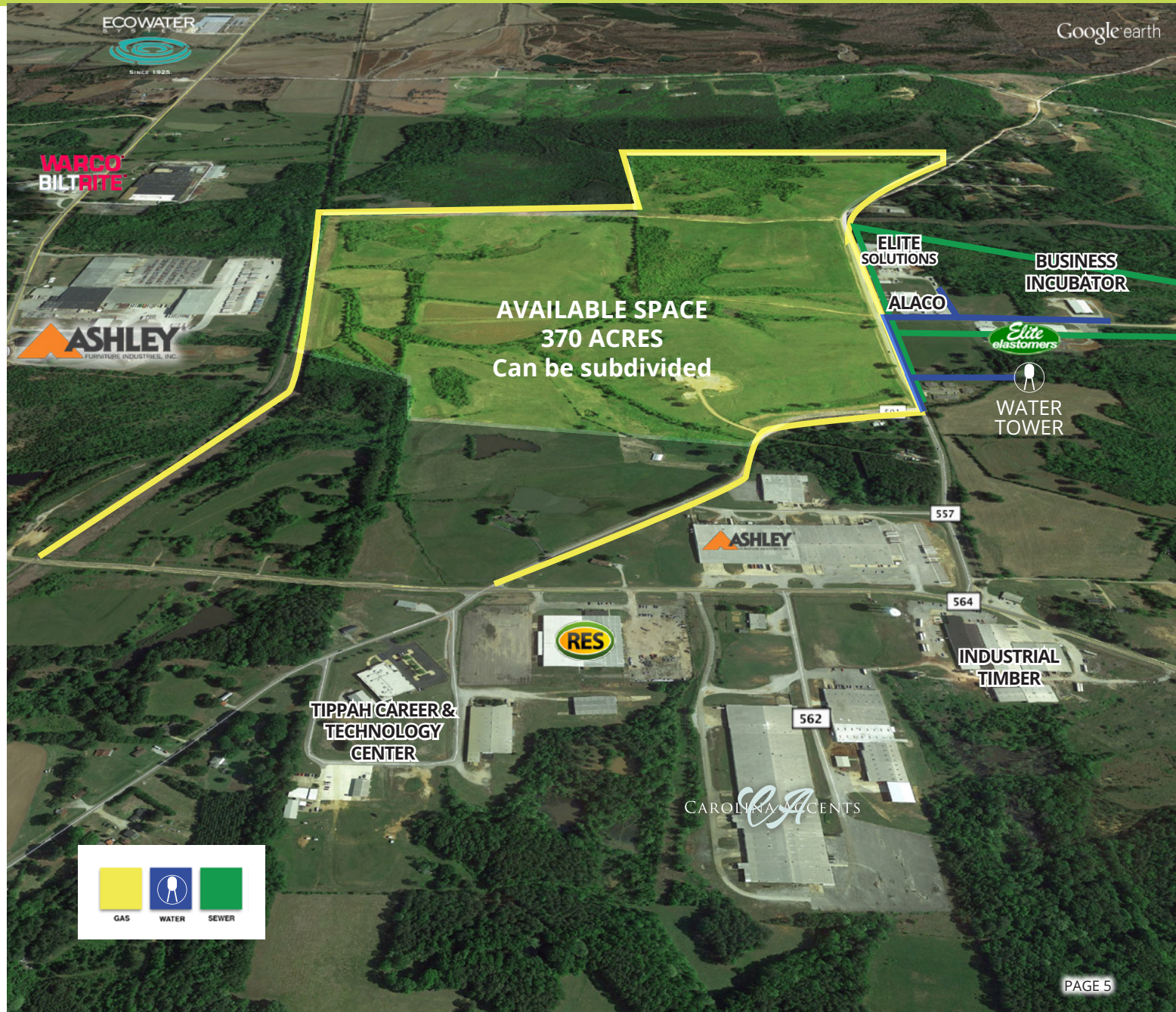
TELECOMMUNICATIONS

Dixie-Net, Inc. / AT&T

T1, Fiber, wireless and other

TIPPAH COUNTY, MISSISSIPPI

SITES & BUILDINGS



SITES & BUILDINGS

WALNUT INDUSTRIAL PARK PROPERTIES WITH EXISTING COMPANIES

DISTANCE: (in miles)

Toyota	41
Tupelo, MS	46
Memphis, TN	39
Jackson, TN	40
Huntsville, AL	142
Birmingham, AL	185

Interstate 22 (MS-78)	32
Interstate 40	40
Interstate 69	29
US Highway 72	On-site
MS Highway 15	One

ENVIRONMENTAL STUDY

- Phase I - **PASSED**

ELECTRIC SERVICE

TVA Service Area
Tippah Electric Power Association

- 46 KV TVA Line on Site.
- 5 Megawatts on Site.
- 25 Megawatts @ 18 months.
- 3 Phase

NATURAL GAS

Provided by City of Walnut

- 4 inch line to property then
- 2 inch line on property

SEWER SYSTEM

Provided by City of Walnut

- 4 inch force main line with power lift

WATER

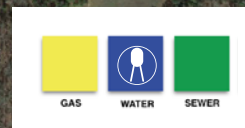
Provided by City of Walnut

- 8 inch main line

TELECOMMUNICATIONS

Dixie-Net, Inc. / AT&T

- T1, Fiber, wireless and other



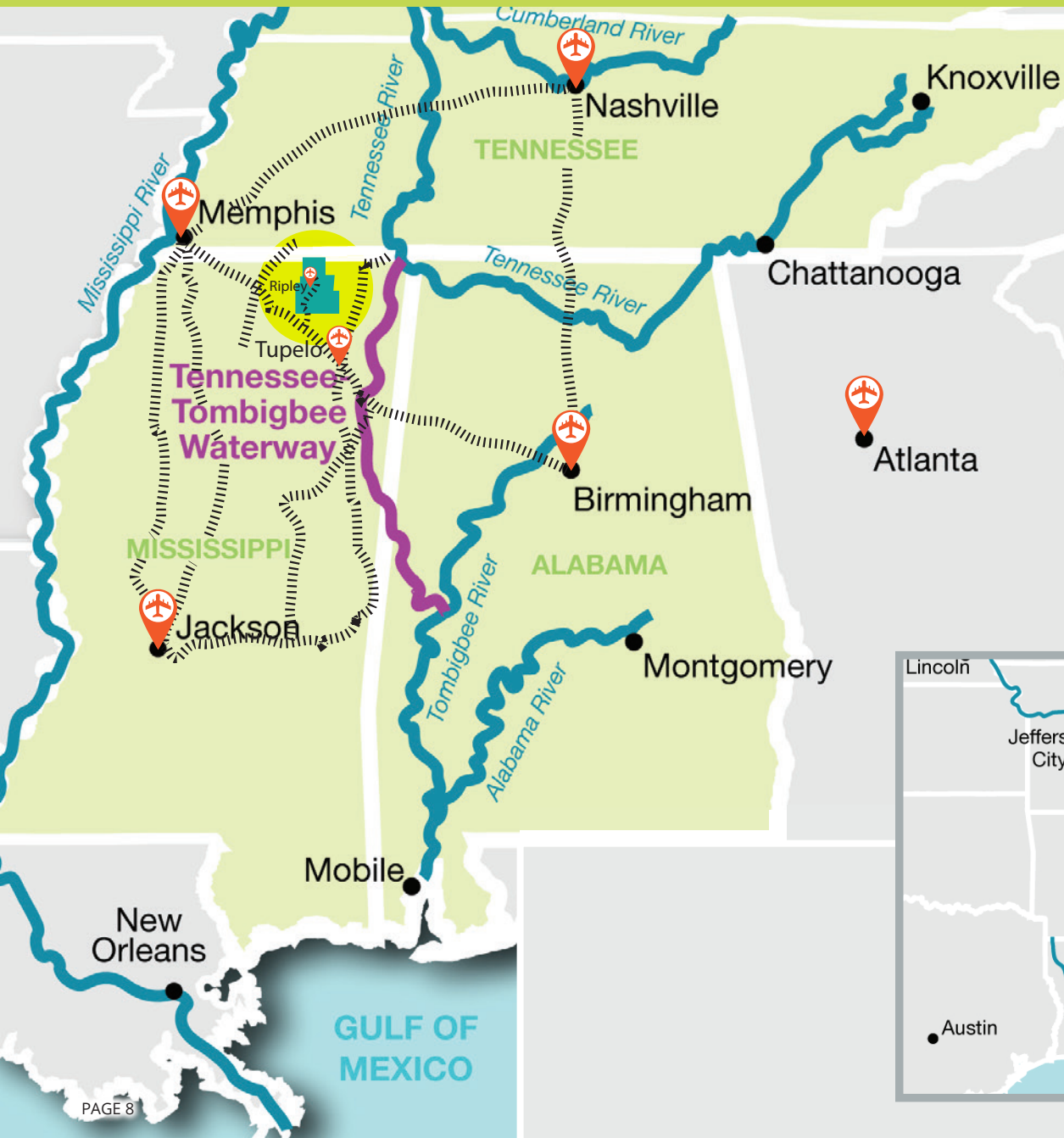


TRANSPORTATION



TRANSPORTATION

AIR, WATER AND RAIL



CLASS I RAIL

BNSF
CN
CSXT
KCS
NS

SHORTLINE RAIL

Pioneer Railcorp

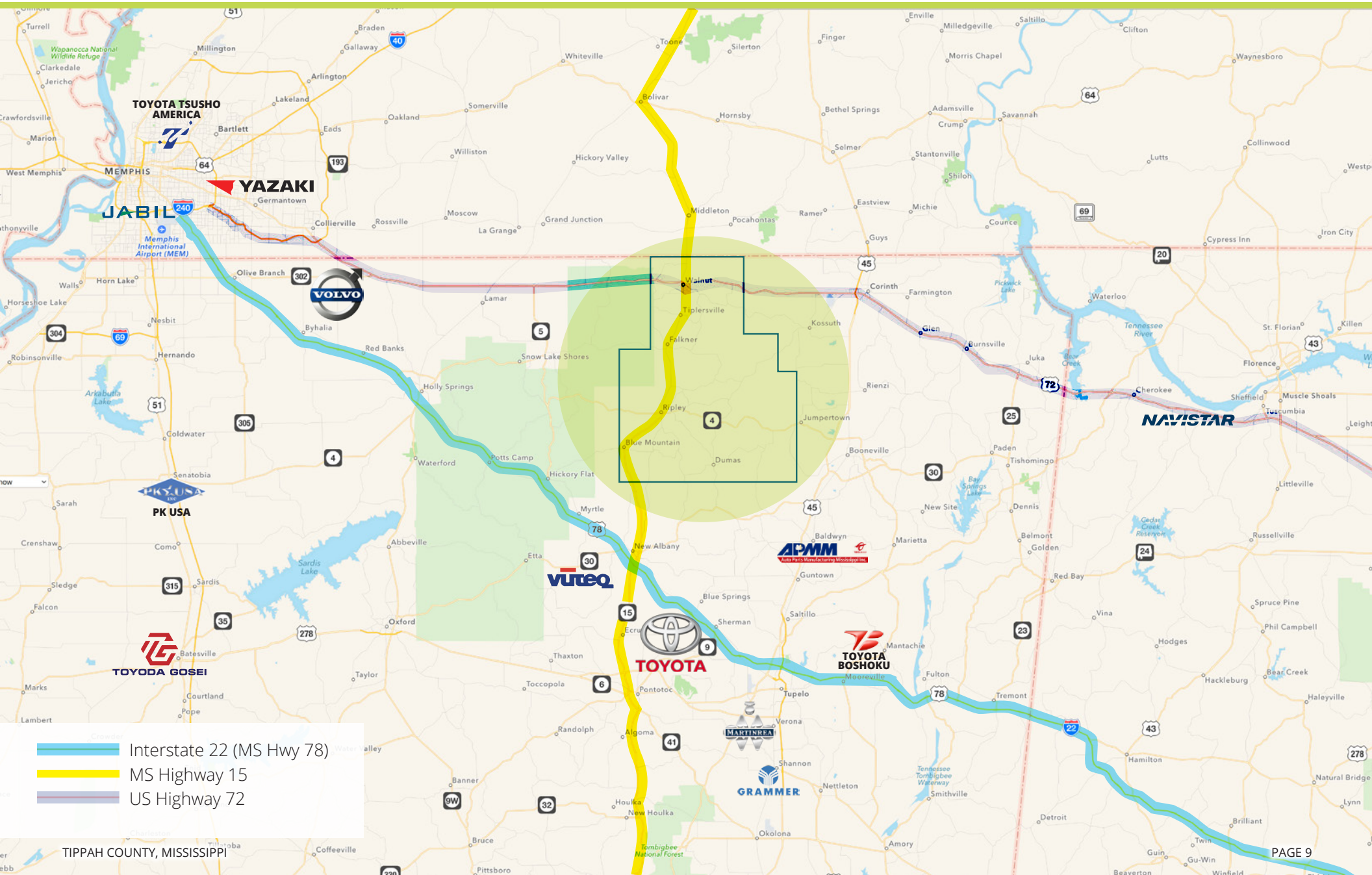
AIRPORTS

Ripley Airport (25M)	On-Site in Ripley
Tupelo Regional Airport (TUP)	42 MI
Memphis International (MEM)	75 MI
Birmingham-Shuttlesworth International (BHM)	179 MI
Nashville International (BNA)	203 MI
Jackson-Medgar Wiley Evers International (JAN)	216 MI
Hartsfield-Jackson Atlanta International (ATL)	325 MI

WATERWAYS

Tennessee-Tombigbee Waterway
Tennessee River
Mississippi River

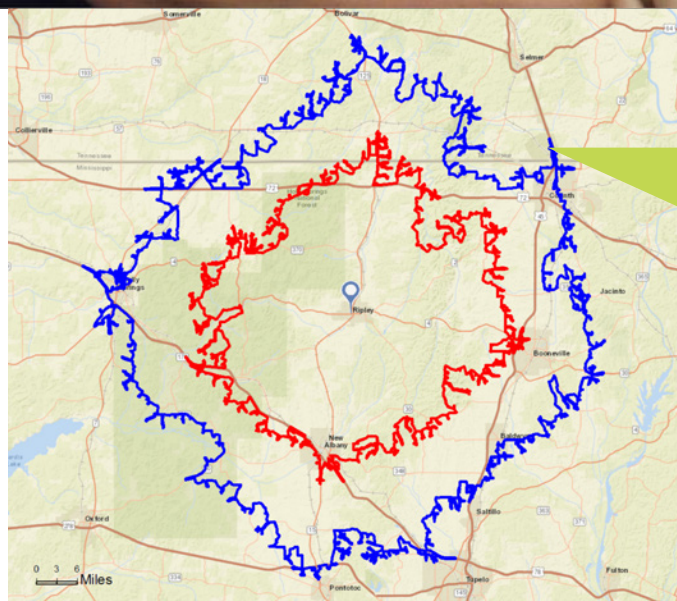






Tippah County is home to many industries, including manufacturing, agriculture, healthcare, education, and construction. The people who call Tippah County home are from a wide variety of social and economic backgrounds, but the one thing they hold in common is a strong work ethic. This diverse workforce has proven itself to be innovative and resilient enough to face any challenge.

The statistics below, based on employer and workforce zip codes, show that the average Tippah County employee drives 37.5 miles to work daily. These drive times show that a much greater workforce exists than can be calculated simply by using population data.



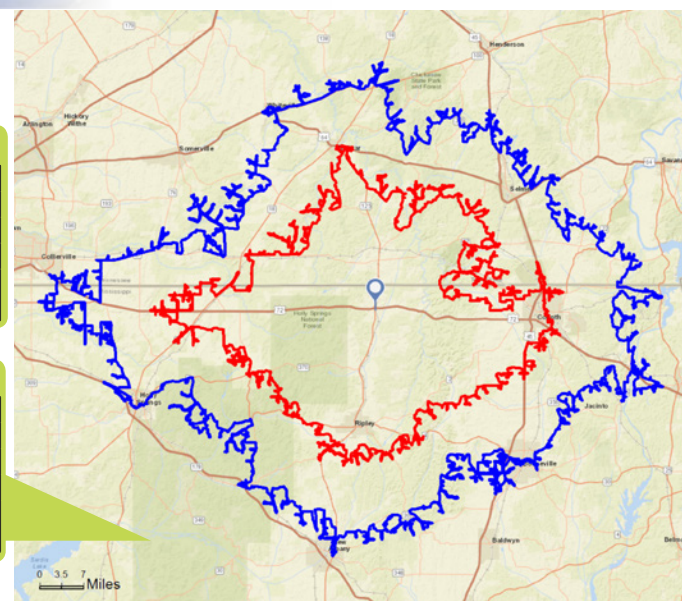
— 30 Minute Radius
— 45 Minute Radius

North Ripley Industrial Park

Data for Area:	30 minutes	45 minutes
Total Businesses:	1,542	4,595
Total Employees:	15,687	56,802
Total Residential Population:	42,537	124,276
Employee/Residential Population Ratio:	0.37:1	0.46:1

Walnut Industrial Park

Data for Area:	30 minutes	45 minutes
Total Businesses:	1,999	4,629
Total Employees:	20,755	47,666
Total Residential Population:	45,747	129,667
Employee/Residential Population Ratio:	0.45:1	0.37:1



Drive Times for North Ripley Industrial Park

Graphs and Data Prepared by: esri

Drive Times for Walnut Industrial Park

WORKFORCE TRAINING

TIPPAH CAREER AND TECHNOLOGY CENTER



The Tippah Career and Technology Center provides workforce preparedness training through programs such as the Career Pathway Experience (CPE), which allows students to gain work experience, develop technology and communication skills, and strengthen development of core academic skills. Other programs offered include automotive construction technology, construction and carpentry, health sciences, information technology, law and public safety, manufacturing fundamentals, and metal fabrication. The center is designed to give students a hands-on approach to learning which provides a much needed skill set for entering the workforce upon graduation.

NORTHEAST MISSISSIPPI COMMUNITY COLLEGE WORKFORCE TRAINING

Northeast Mississippi Community College Division of Workforce Training and Economic Development offers non-credit programs specifically designed to meet the changing technical requirements for today's jobs. The department has a long-standing history of working with major industry partners. Through programs with business, government and community employers, local industry is able to receive the training needed to stay competitive in today's business world. Meanwhile the under- and unemployed can prepare for good paying positions through accelerated courses designed for and with employers.

More than 50 targeted skills workforce courses are offered through NEMCC Workforce to Northeast Mississippi citizens.



EDUCATION









Founded in 1873 as a Christian liberal arts college and affiliated since 1920 with the Mississippi Baptist Convention, the College recruits undergraduate and graduate students who are committed to scholarship, servant leadership, and service in church and community. The student-centered campus exhibits a climate of personal attention, respect, inclusion, and high expectations in all

modes of delivery. Students are guided to reach their God-given potential with the leadership of professionals who share the common bond of Christian faith and who are committed to excellence.

BMC offers both undergraduate and graduate degrees in a variety of study areas.

FOUR-YEAR INSTITUTIONS

	Blue Mountain College Blue Mountain, Mississippi	ON-SITE
	Rust College Holly Springs, Mississippi	38 MI
	The University of Mississippi (Ole Miss) Oxford, Mississippi	52 MI
	The University of Memphis Memphis, Tennessee	75 MI
	The University of North Alabama Florence, Alabama	90 MI
	Mississippi State University Starkville, Mississippi	108 MI

HEALTHCARE



**Tippah County
Hospital**

tippahcountyhospital.com

ACUTE CARE
AMBULANCE SERVICE
EMERGENCY DEPARTMENT
LABORATORY
PHYSICAL THERAPY
OCCUPATIONAL THERAPY

SPEECH THERAPY
RADIOLOGY
RESPIRATORY THERAPY
SENIOR CARE
SWING BED PROGRAM
TIPPAH COUNTY NURSING HOME

City of Ripley Mississippi

500 South Main Street
Ripley, MS 38663
(662) 837-0130
www.ripley.ms.gov

City of Walnut Mississippi

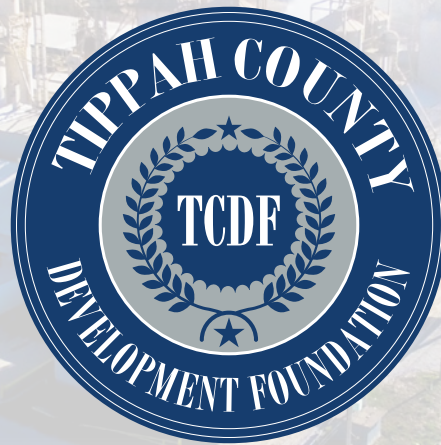
621 Main Street
Walnut, MS 38683
(662) 223-4405
www.walnut.ms

Town of Falkner Mississippi

P.O. Box 117
Falkner, MS 38629
(662) 837-4940

Town of Blue Mountain Mississippi

110 W Mill St
Blue Mountain, MS 38610
(662) 685-4721



Tippah County Development Foundation

Matthew Harrison, Director
mharrison@tippahcounty.org

(662) 837-3353

201 Union St
Ripley, MS 38663

www.tippahcounty.org



TIPPAH COUNTY, MISSISSIPPI
www.tippahcounty.org

